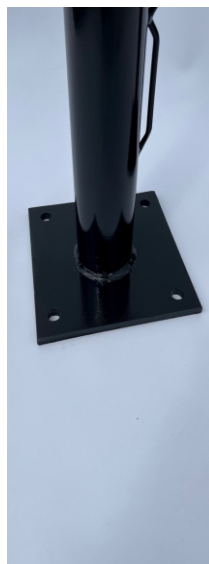


Surface Mount Tennis Posts

PROTESM-B81
PROTESM-G81

post size	3" round; 42" high
construction	12-gauge powder-coated galvanized steel upright with 8" x 8" x 3/8" welded metal base. Base includes four 5/8" mounting holes.
post caps	powder-coated aluminum caps with wheels
winder	Internal Brass winder
hooks	4.5" cable hooks
lacing roads	integrated welded steel
warranty	3-year limited warranty



Green



black

specifications and colors subject to variation.
Please consult a local structural engineer to specify the type and size of anchor needed.